

Limited Warranty:

Igloo Products Corporation warrants the IcyTunes to be free from defects in material or workmanship under normal use and service for ninety-days from the date of original purchase. This warranty is your exclusive warranty and there are no warranties which extend beyond the description on the face hereof. Igloo shall either repair the product free of charge or provide you with a replacement product if the product proves defective under the terms of this warranty. The warranty is valid for the original retail purchaser and is not transferable. Dealers, service centers, or retail stores do not have the right to change the terms and conditions of the warranty. Igloo is not responsible for incidental or consequential damage resulting from any malfunction. The warranty shall not apply to any unit, or component thereof, which is not returned as stated below and/or which has been: (1) damaged through abuse, misuse or neglect, (2) damaged in an accident, (3) used for any purpose not expressly stated in this instruction sheet, (4) repaired or altered in any way, including electronic changes from its original configuration. Any implied warranties including the implied warranty of merchantability are also limited to duration of ninety-days from the original purchase date. This warranty gives you specific legal rights and you may also have other rights which vary from state to state, province to province, country to country. Please carefully review the care instructions for proper use and care of the product. Please visit our website at www.igloocoolers.com or www.igloo-parts-store.com for more information.

HOW TO OBTAIN WARRANTY SERVICE: DO NOT RETURN PRODUCT TO THE PLACE OF PURCHASE. If this product fails due to defects in material or workmanship during the ninety-day warranty period, you must submit a claim as follows: Call Igloo Products Corp. Consumer Service Toll-Free At **1-866-313-1200** for instructions on return of product. **IN ORDER TO OBTAIN WARRANTY PERFORMANCE, YOU MUST RETURN THE PRODUCT, INCLUDING ANY COMPONENTS OR ACCESSORIES, AS INSTRUCTED BY CUSTOMER SERVICE ALONG WITH PROOF OF PURCHASE AND A BRIEF DESCRIPTION OF THE NATURE OF THE DEFECT.**

Specifications

POWER REQUIREMENT

DC 6V operation with LED Indicator of POWER and RADIO/AUDIO PLAYER.

Battery: Uses 4 each size AA or same type DC1.5V (Not Included).

DC Adaptor: DC6V/1A , D=3.5 mm (Negative), D=1.0 mm (Positive) (Not Included)

RADIO: MONO SYSTEM

FM Band: 88-108 MHz

AM Band: 530-1710 KHz.

Remarks: Actual frequency shows on the radio dial of each unit.

AUX-IN STEREO POWER AMPLIFIER WITH BASS BOOSTER

Input Terminal: D: 3.5mm stereo plug with audio cable (included).

Input Impedance/Sensitivity: 200mv/ 5k ohm (at 1 khz).

Frequency Response: 200-18k hz

Output Terminal: D:3.5mm Stereo Speaker Jack

Master Output Power: 3w+3w (P.M.P.O.)

Bass Boost Gain Effect: 100 hz, +30db

LOUDSPEAKER (TWO WAY)

IMPEDANCE: D=3 INCH / 8 ohm, bubble edge cone,

full-range dynamic loudspeaker

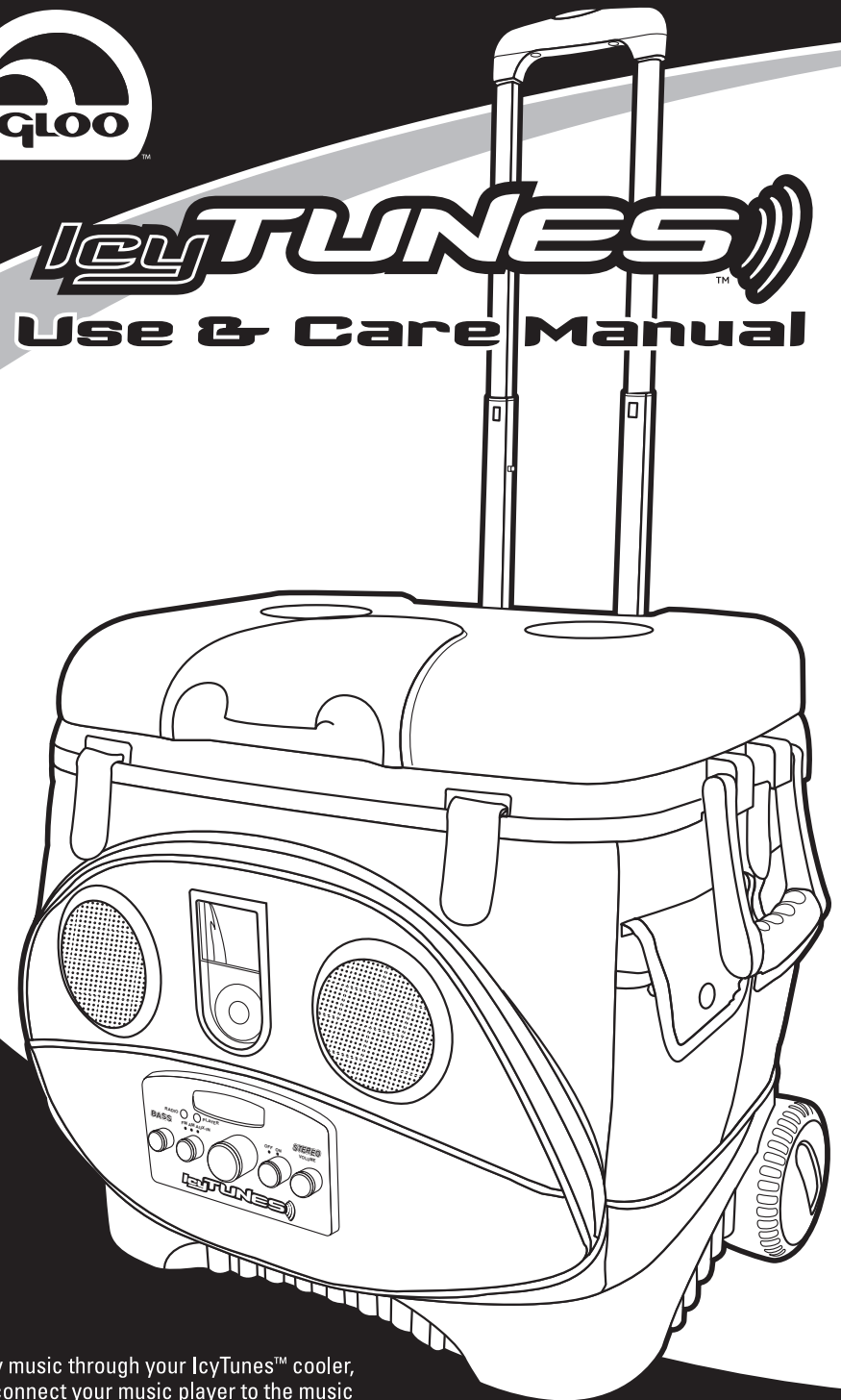
D:3.5mm stereo plug with cable

Design and specifications are subject to change without notice.



IcyTunes™

Use & Care Manual



To enjoy music through your IcyTunes™ cooler, simply connect your music player to the music module. **Read all instructions carefully before using your IcyTunes™ cooler. Save this manual for future reference.**

Uses 4 "AA" Batteries, not included

Setup

Step 1-Battery Installation

Open Music Compartment, slide battery door open, and insert four "AA" batteries (Alkaline batteries are recommended) into the amplifier as shown, properly aligning the polarity at "+" and "-" poles. (See Figure 2).

Improper installation of batteries can cause leakage which may corrode the compartment or cause the batteries to burst.

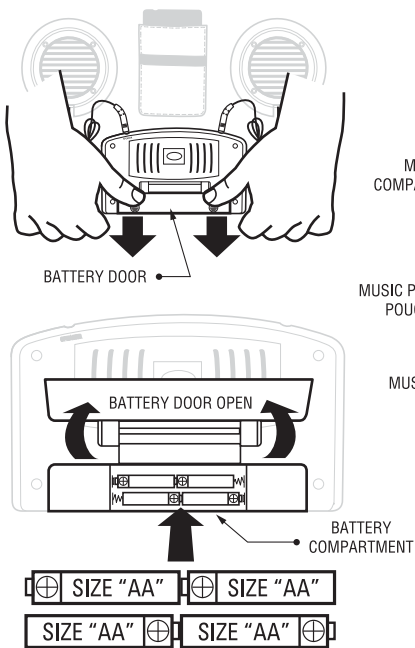


Figure 2

Step 2-MP3 Connection

Locate the wire connected to the side of the music module and plug it into your MP3 headphone jack. Place your MP3 into the Music Player Pouch. (See Figure 3).

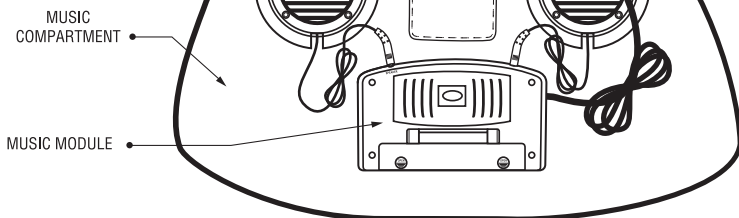


Figure 3

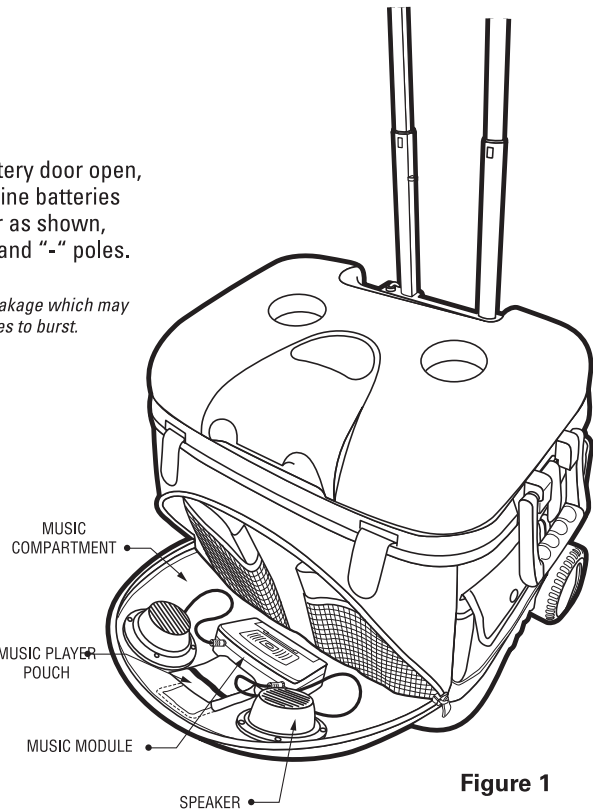
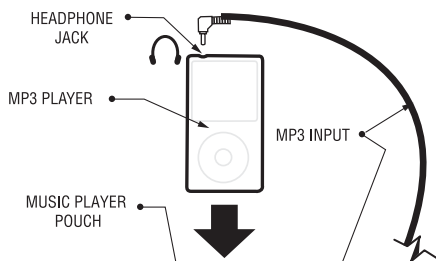


Figure 1



Using Your IcyTunes Cooler

Power On/Off – Turn the knob to the "ON" position. The power indicator LED light on the Radio or Player will light up to indicate power is on. **IMPORTANT** – be sure to turn the power knob to the "OFF" position when not in use. (See Figure 4)

Radio/MP3 Player Operation – Turn the knob to select between FM, AM or AUX-IN. The power indicator LED on the Radio or Player will light up to indicate which operation you have selected. Select AUX-IN when using an MP3 player. (See Figure 4)

Volume Control – Volume is controlled by both the Stereo Volume Knob and the MP3 source. Adjust both to control the volume to your satisfaction. (See Figure 4)

Radio Tuning – Select AM or FM. The middle dial is the radio tuner. Turning it moves the channel selector on the AM/FM dial. Volume is controlled by the Stereo Volume knob. (See Figure 4)

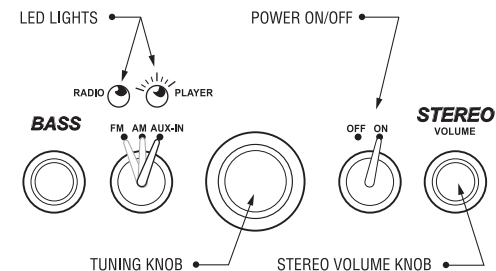
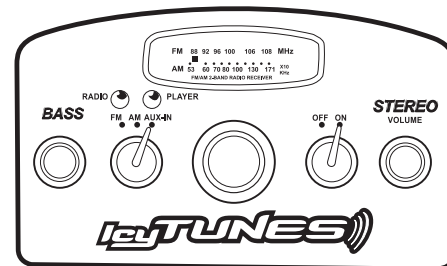


Figure 4

Troubleshooting

No Sound/Music

- Check batteries to make sure they have been inserted correctly.
- Check all wires to make sure they are connected properly.
- Check power to make sure it is turned on.

LED Lights do not light up when power is on

- Check batteries to make sure they have been inserted correctly.

Care & Maintenance

- Never immerse in water.
- To clean, wipe the inside surfaces with a soft, non-abrasive damp cloth. Mild soap and warm water are recommended. Take care to not get the music module wet.
- Remove the batteries if your IcyTunes Cooler will not be used for an extended period of time.
- Alkaline batteries are recommended for longer listening enjoyment.
- Do not mix old and new batteries.
- Do not mix Alkaline, Standard (Carbon-Zinc), or Rechargeable (Nickel Cadmium) batteries.
- Do not put ice or beverages in the music module pocket.