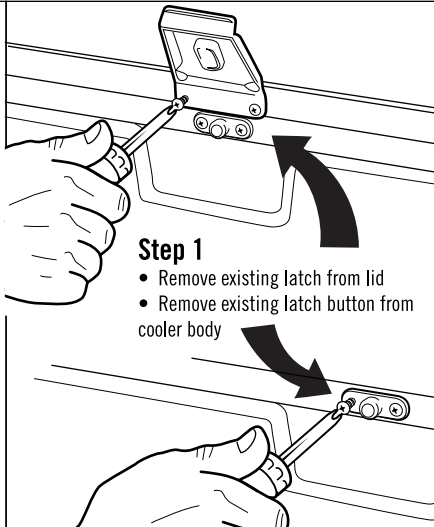


## Parts Included

- 2-piece latch assembly (latch and latch button)

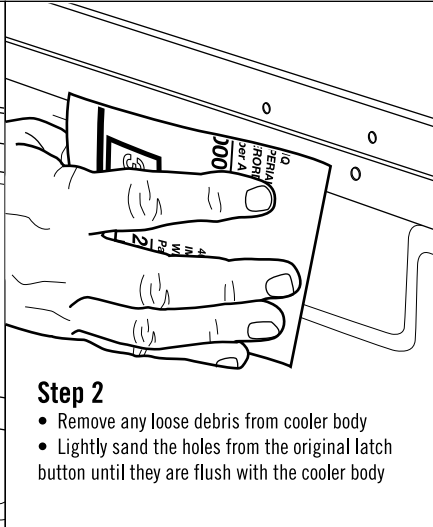
## Tools Needed

- Phillips head screwdriver
  - 200 grit sandpaper
  - Silicone Caulk (optional)



### Step 1

- Remove existing latch from lid
- Remove existing latch button from cooler body



### Step 2

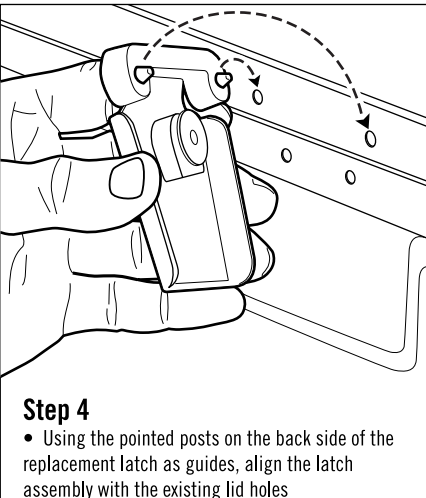
- Remove any loose debris from cooler body
- Lightly sand the holes from the original latch button until they are flush with the cooler body



### Step 3

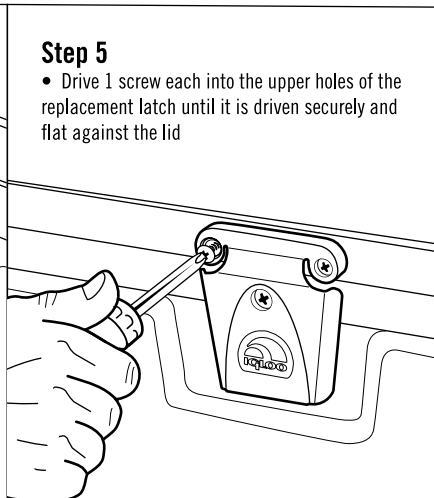
- If latch button is not pre-assembled into latch, snap it into place before proceeding to step 4

**DO NOT REMOVE LATCH BUTTON FROM LATCH. LEAVE ASSEMBLED FOR INSTALLATION.**



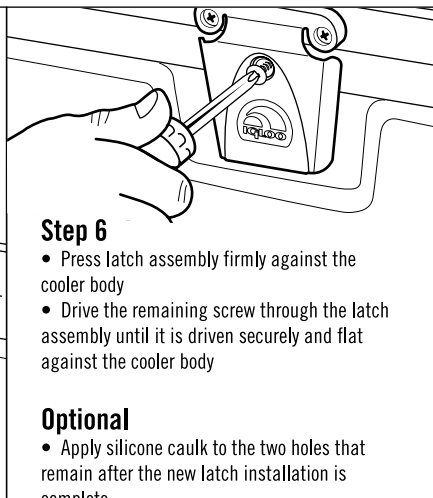
### Step 4

- Using the pointed posts on the back side of the replacement latch as guides, align the latch assembly with the existing lid holes



### Step 5

- Drive 1 screw each into the upper holes of the replacement latch until it is driven securely and flat against the lid



### Step 6

- Press latch assembly firmly against the cooler body
- Drive the remaining screw through the latch assembly until it is driven securely and flat against the cooler body

### Optional

- Apply silicone caulk to the two holes that remain after the new latch installation is complete



## Universal Latch Installation Instructions

